

ScadaPro



What is ScadaPRO?

ScadaPro is an advanced real-time information system incorporating a set of integrated modules providing automatic data acquisition, monitoring, recording, trending, man-machine interfaces, networking, report generation and process control, making it readily adaptable to a wide range of engineering applications.

Software for Real-Time Acquisition and Process Control

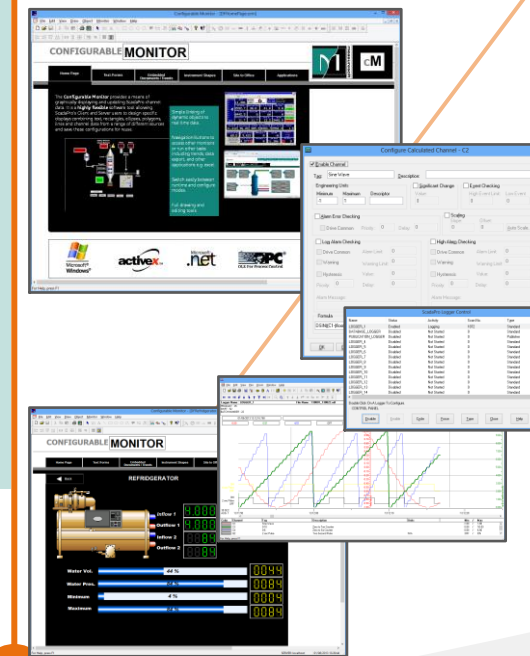
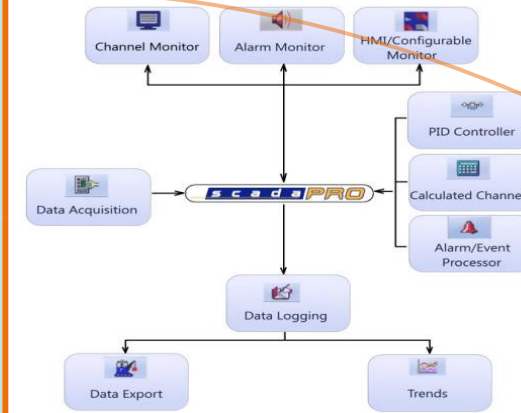
Copyright ©2013 Measuresoft Development Ltd. All Rights Reserved.

Features

- Advanced data acquisition and data logging
- Logging to files or databases
- Advanced alarm processing
- Real-time calculator with free form expression
- Real-time data and alarm monitoring and historical trending
- Standard data export to multiple formats
- HMI display builder including rich set of instrumentation controls
- Full client-server architecture over LAN, WAN and Internet
- Web service option to allow incoming connections through firewalls over the Internet
- Support for LAN Desktop, Remote Desktop, Internet Explorer and RDWeb Clients
- Supports the Excel RTD and OPC Data Access standards
- Automatic startup without operator intervention
- Runs on both legacy (XP) and current versions of Windows 32-bit or 64-bit versions available
- Integrates fully with Windows Security to only allow access to authorised users
- Site to Office option to stream data for viewing and reporting by staff and customers
- Add-ons for Mud Logging, PID Control and Gas Chromatograph measurement

Benefits

- Flexible licensing model
- ScadaPro is scalable. Start with as many I/O points, devices and users as you need and add as required. Performance remains consistent across both small and large systems.
- Data acquisition from a wide variety of devices. Multiple data loggers allow a wide variety of storage tasks to be performed
- Perform calculations without programming
- Automatic or manual control via operator entry, calculator or PID controller
- Capture alarms and ensure the notification to the right people at the right time
- Full audit trail of changes which affect system operation
- Build your own operator displays using a flexible HMI without programming
- Flexible and simple trending tools designed for end-users
- Generate spreadsheet reports automatically or manually using templates
- Add as many network or internet clients as required
- Flexible connection methods for clients
- Interface and connect to third party systems using a variety of industry standards



- Process Monitoring and Control
- Oil and Gas Well Rig Monitoring
- Well Completion and Stimulation Pumping Systems
- Mud Logging and Drilling
- Energy Management
- Power Generation and Transmission
- Mechanical and Electrical Test

- Environment & Temperature Monitoring
- Building Management Systems
- Laboratory Testing
- Machine Efficiency Calculation and Downtime Recording
- Wastewater Management
- Remote Asset Management
- Structural Testing

PARTNERSHIP COURTYARD,
RAMPARTS ROAD,
DUNDALK, IRELAND
TEL: +353 42 9332399

13380 SOUTH GESSNER,
MISSOURI CITY,
TX 77489, USA
TEL: +1 281 969 7529

SALES@MEASURESFT.COM

WWW.MEASURESFT.COM

